

PRODUCT CATALOG

www.stsunlab.com

ST SUNLAB Ltd.

Connected Solutions,
Infinite Possibilities



CONNECTED SOLUTIONS,
INFINITE POSSIBILITIES

Headquarter

A-1706, Greatvalley, 9gil 32, Digital-ro, Geumcheon-gu, Seoul 08512, Korea

Tel +82-2-6327-5656 E-mail info@stsunlab.com www.stsunlab.com

LinkedIn www.linkedin.com/company/stsunlab Youtube www.youtube.com/@stsunlab

US

E-mail info@suntechus.com

Brazil

E-mail contato@suntechdobrasil.com.br

LATAM

E-mail info@suntechlatam.com

EU

E-mail info.eu@stsunlab.com





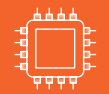
Founded
in 2001



Headquarters
in Seoul, Korea



International
corporation



First to introduce
a chip-based
design



Clients in
20 countries



Shipped over
8 million devices

ST SUNLAB LTD.

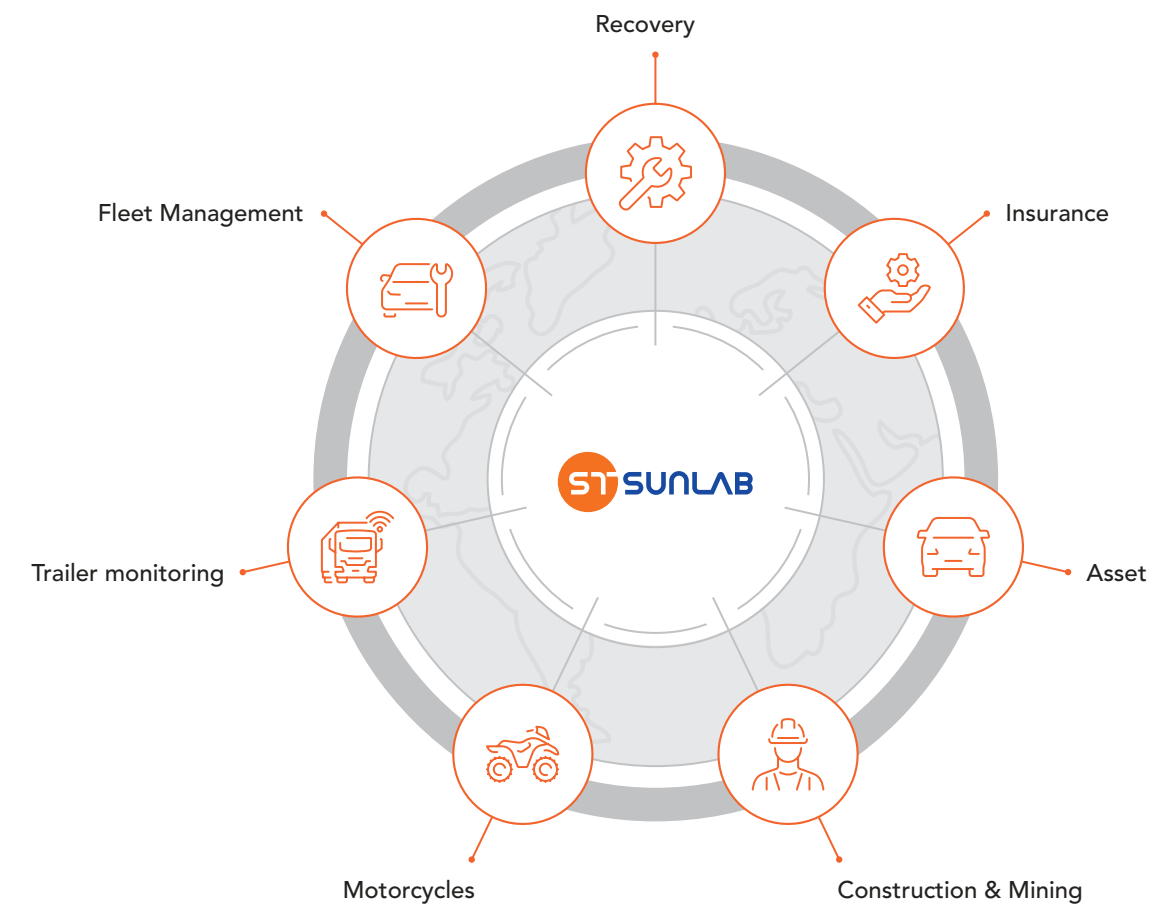


“
**Connected Solutions,
Infinite Possibilities**
”

ST SUNLAB is a developer, manufacturer, and global distributor of IoT telematics hardware. It was founded in Seoul, South Korea, in 2001.

In 2024, Suntech International took a significant step forward by merging with Wizardlab, a software company in South Korea. Under the new name ST SUNLAB, we continue our journey with an enhanced focus on innovation and excellence.

SOLUTIONS



Vehicle



LTE Cat. M1

- | | | |
|---|--|---------------------------------|
| 06
ST4305 series
ST4315 series | 07
ST4345 series
ST4345LB | 08
ST4215U NEW |
|---|--|---------------------------------|

LTE Cat. 1

- | | | |
|----------------------------|----------------|---------------------|
| 09
ST8300 series | ST8310U series | ST8310UM NEW |
|----------------------------|----------------|---------------------|

LTE Cat. M1

VEHICLE



ST4305 series

LTE CAT M1 2G



14pin Advanced Vehicle Tracker

- Network: LTE Cat. M1/ NB-IoT/ 2G
- Extensions available in connection with ST25T, ST20U
- I/O: 14pin
- Rechargeable backup battery: 450mAh
- Variable models: ST4305R/ RE



ST4315 series

LTE CAT M1 2G



Essential functionality, various Variable models

- Network: LTE Cat. M1/ NB-IoT/ 2G
- I/O: 6pin
- IP67
- Rechargeable backup battery: 220mAh
- Variable models: ST4315U/ W/ R/ RW

LTE Cat. M1



ST4345 series

LTE CAT M1 2G



Compact Size Waterproof Tracker

- Network: LTE Cat. M1/ NB-IoT/ 2G
- I/O: 8pin or 6pin
- IP67
- Rechargeable backup battery: 450mAh
- Variable models: ST4345R/ LC/ LB



ST4345LB

LTE CAT M1 2G



Low-cost BLE Waterproof Tracker

- Network: LTE Cat. M1/ NB-IoT/ 2G
- BLE supported
- I/O: 5pin (1 Ignition + 1 input + 1 output)
- IP67
- Rechargeable backup battery: 450mAh

LTE Cat. M1

VEHICLE



NEW

ST4215U

LTE CAT M1 2G



Compact size Low-cost Tracker

- Network: LTE Cat. M1/ NB-IoT/ 2G
- I/O: 6pin or 5pin
- IP67
- Rechargeable backup battery: 220mAh

LTE Cat. 1

VEHICLE



ST8300 series

LTE CAT1 2G



14pin Cat. 1 Advanced Vehicle Tracker

- Network: LTE Cat. 1/ 2G
- Extensions available in connection with ST25T, ST20U
- I/O: 14pin
- Fleet management solution
- Rechargeable backup battery: 450mAh



ST8310U series

LTE CAT1 2G



Low-cost Cat. 1 Tracker with essential functionality

- Network: LTE Cat. 1/ 2G
- I/O: 6pin or 5pin
- IP67
- Rechargeable backup battery: 220mAh



ST8310UM NEW

LTE CAT1 2G



Ultra compact size LTE Cat. 1 Tracker

- Network: LTE Cat. 1/ 2G
- I/O: 6pin or 5pin
- IP67
- Rechargeable backup battery: 220mAh

Asset

Large capacity battery

12

ST4955 LCBW NEWST4915 LCBF NEW

13

ST4955 series

ST4915 series

14

ST4335

ST4945B

Compact size

16

ST4930 UPCOMINGST4932 UPCOMING

17

ST4290(L)

ST4945(S)



Large capacity battery

NEW

ST4915 LCBF

LTE CAT M1 2G



Low-cost long term used BOT Tracker with BLE & Wifi

- Network: LTE Cat. M1/ NB-IoT
- BLE 5.4 supported
- Primary battery: 57Ah
- IP67
- **Multi GNSS**
Improved Location Accuracy,
Extremely Low Power Consumption
- Wi-Fi Geolocation Available

NEW

ST4955 LCBW

LTE CAT M1 2G



Low-cost BLE Solar Tracker with 1-wire

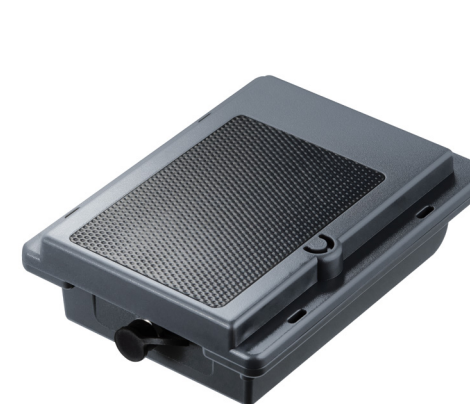
- Network: LTE Cat. M1/ NB-IoT/ 2G
- BLE 5.4 supported
- **Multi GNSS**
Improved Location Accuracy,
Extremely Low Power Consumption
- Rechargeable battery:
- 5.2Ah/ 7.8Ah/ 10.05Ah (*Option)
- IP67



Large capacity battery



ASSET



ST4955 series

LTE CAT M1 2G



LTE Solar BOT Tracker

- Network: LTE Cat. M1/ NB-IoT/ 2G
- **Battery charging with solar panel**
- BLE 5.4 supported and Wi-Fi positioning (*Option)
- Rechargeable battery: 5.2Ah/ 7.8Ah/ 10.05Ah (*Option)
- IP65/ IP67
- **27 hours working (30min report)**
- Temperature, Humidity, Barometric pressure (*Option)
- Variable models: ST4955B/ DS/ BDS



ST4915 series

LTE CAT M1 2G



Sleek, rugged BOT Tracker for up to 7 years

- Network: LTE Cat. M1/ NB-IoT
- BLE 5.4 supported and Wi-Fi positioning (*Option)
- **Primary battery: 57Ah**
- IP65/ IP67
- Lugged case with 4 holes to fix
- Internal light sensor for door monitoring
- Temperature, Humidity, Barometric pressure (*Option)
- Variable models: ST4915B

Large capacity battery



ST4335

LTE CAT M1 2G



15pin Hybrid Tracker

- Network: LTE Cat. M1/ 2G
- BLE supported (*Option)
- Rechargeable battery: 5.2Ah/ 7.8Ah/ 10.05Ah (*Option)
- **I/O: 15pin**
Big battery and low consumption
Lugged case for harsh environment
- IP67



ST4945B

LTE CAT M1 2G



Large Capacity Battery Operated Tracker

- Network: LTE Cat. M1/ 2G
- BLE supported (*Option)
- Rechargeable battery: 18.2Ah
- IP67



Compact size

NEW

ST4930

LTE CAT M1 2G



Primary BOT with Universal Protocol

- Network: LTE Cat. M1/ NB-IoT/ 2G
- BLE 5.4 supported (*Option)
- Primary Battery: 12Ah
- **Multi GNSS**
Improved Location Accuracy, Extremely Low Power Consumption
- Light-sensor/ Built-in 6-axis accelerometer & gyro sensor
- IP67



NEW

ST4932

LTE CAT M1 2G



Rechargeable BOT with Universal Protocol

- Rechargeable Battery: 5.9Ah
- IP67

Compact size

ASSET



ST4290(L)

LTE CAT M1



Compact size BOT Tracker (long-life time)

- Network: LTE Cat. M1
- Primary battery: 8Ah/ 19Ah(L)
- Magnet Cradle Available
- IP67



ST4945(S)

LTE CAT M1 2G



Compact size Asset Tracker

- Network: LTE Cat. M1/ NB-IoT/ 2G
- Rechargeable battery: 1,500mAh(S)/ 3,000mAh
- Magnet Cradle Available
- IP66

RF



RF



NEW

ST4410G



LTE CAT M1 2G RF

LTE Carton-Box Tracker

- Network: LTE Cat. M1/ NB-IoT/ 2G
- Dual Solution (LTE + RF433MHz)
- Jamming detection
- Rechargeable battery: 2,750mAh
- Concurrent GNSS Location

ST410MG Series



2G RF

RF Carton Box Tracker

- Solution (GSM/GPRS + RF433MHz + GPS)
- Rechargeable battery: 2,750mAh
- Jamming detection
- Application: Cargo/ Merchandise/ Asset Tracker
- Variable models: ST410M/MGC

ST419NG Series



2G LORA

RoLa Carton Box Tracker

- Solution (GSM/GPRS + RF900MHz + GPS)
- Rechargeable battery: 2,700mAh
- Jamming detection
- Application: Cargo/ Merchandise/ Asset Tracker

ETC



ETC



ST25T



Extension

- 6pin + 8pin
- BLE communication(*Option)
- Option: RS232, RS485, Input, ADC, Serial Camera
- J1939, J1708, RS485, RS232 x3



ST20U



Extension

- 6pin + 8pin
- Option: RS232, RS486, Input, ADC, Serial Camera
- J1939, J1708, RS232